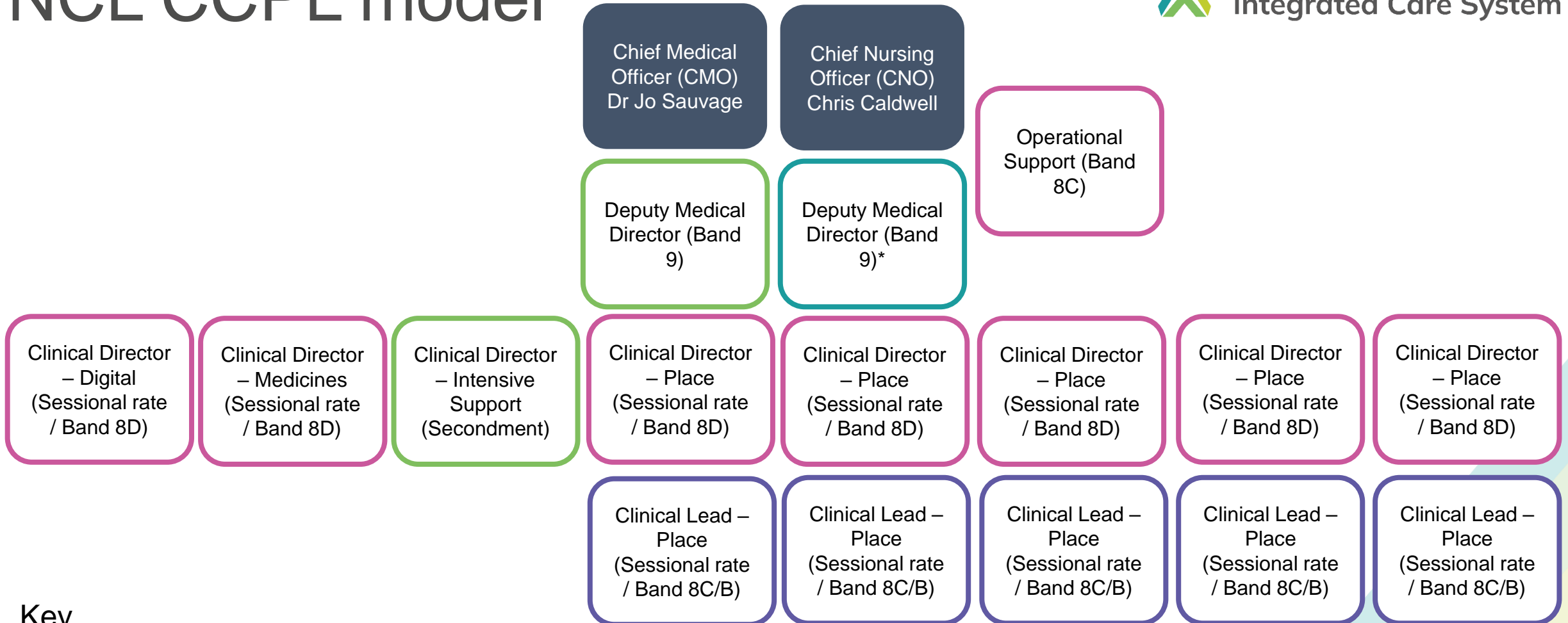
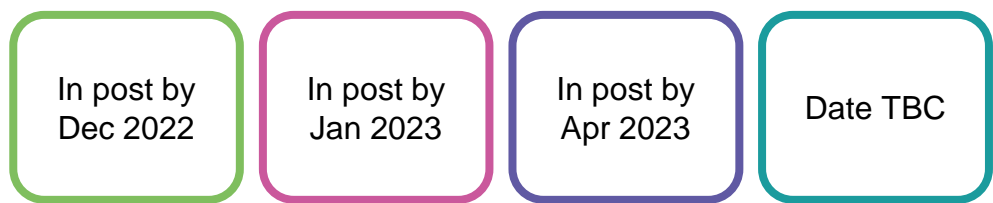


NCL CCPL model



Key



Deputy Directors – 2 x WTE
Clinical Directors – Place (Total 2 x WTE), £300 per session for GPs and Band 8D or equivalent for appointees from NHS organisations or Local Authorities
Clinical Leads – Place (Total 5 x WTE), £280 per session for GPs and Band 8C/8B or equivalent for appointees from NHS organisations or Local Authorities. Number of roles to be determined.
WTE = whole time equivalent

* The opportunity to recruit a second Deputy Director role will be subject to review of critical priorities for the ICB which will be finalised as part of this process.

Overview of recruitment activities and indicative timescales

We will be recruiting to the new clinical and care leadership model on a phased basis, with all new roles in place by 1 April 2023.

Role	Advertised from	Onboarding from	Envisaged Start Date
Deputy Medical Director	End of September 2022	October 2022	November 2022
Clinical and Care Directors – Place	October/ Nov 2022	December 2023	January 2023
Clinical and Care Director – Medicines	October/ Nov 2022	December 2023	January 2023
Clinical and Care Director - Digital	October/ Nov 2022	December 2023	January 2023
Operational Support	October/ Nov 2022	December 2023	January 2023
Clinical Leads – Place	January 2023	March 2023	April 2023