

# NCL Fertility – Patient Pathway

Version: FINAL  
Review Date: 25/07/2023

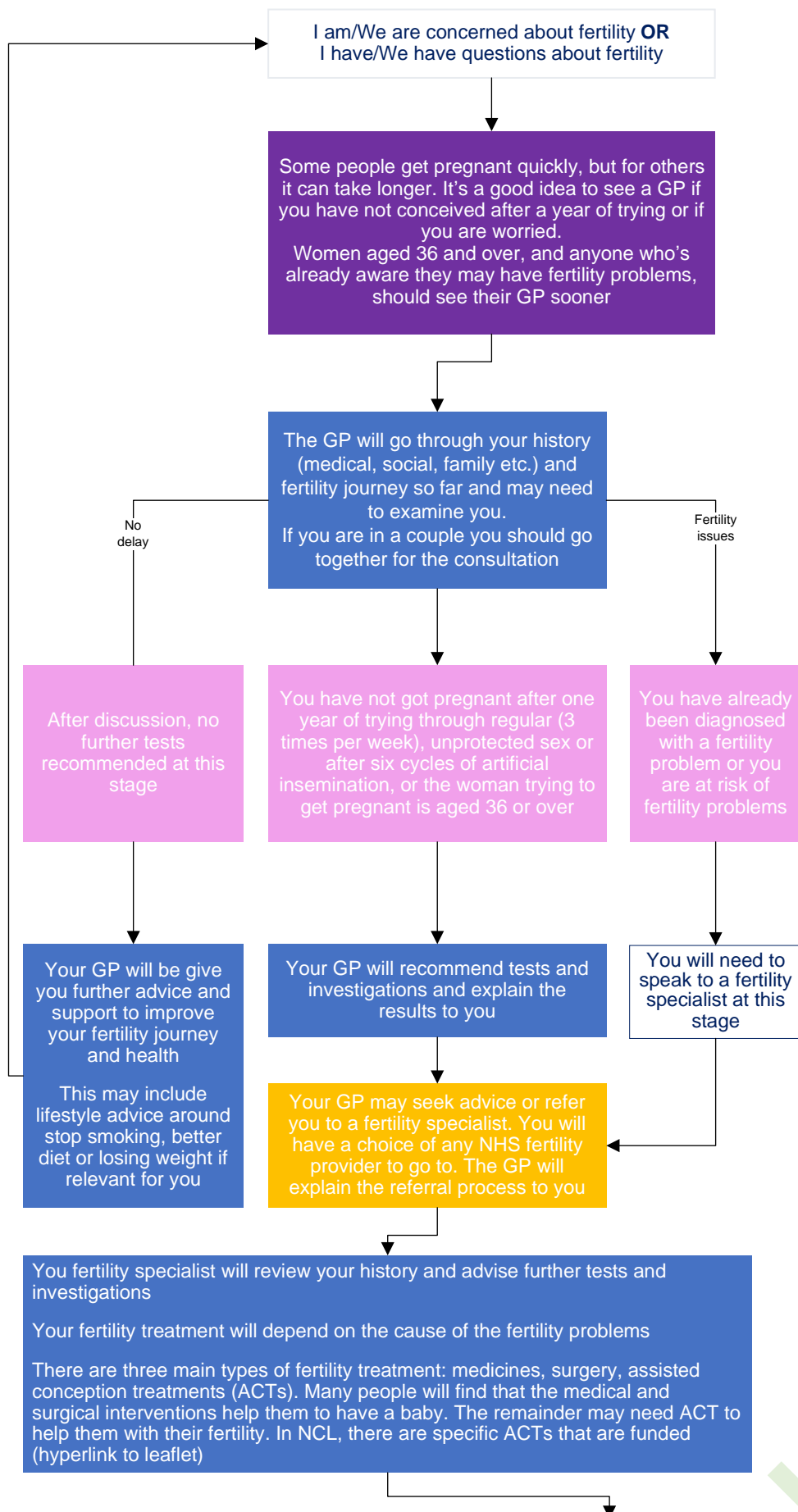
## Key

Access or Information
Outcomes
Healthcare Professional Action
Contact with Healthcare Professional
Advice
Audio-visual aids for patients and GP
Ctrl+click to use hyperlink

**Note:** Alpha-numeric step references are to aid printing in black and white and colour blindness

You can use the **RESOURCES** linked below throughout the process for further information

<a href="#">Patient leaflet</a>
<a href="#">Patient FAQs</a>
<a href="#">Fertility Policy</a>
<a href="#">HFEA website</a>



ACTs are funded for eligible individuals and couples with fertility problems. This is regardless of sexual orientation, gender identity or relationship status. To be eligible for NHS-funded assisted conception treatments most people who live in north central London will need to meet specific criteria which includes, age (for the woman), smoking status, weight (for the woman) For full criteria, please page 22 of the Fertility Policy

**DISCLAIMER: This is an overall summary of the pathway. Some people may find they do not fall into these categories. They should always discuss with their clinician the best options for them**